

PITCH ROOFS

Introduction

Insulating the pitch of the roof is a popular construction method. The **HEXATHERM** range of un-ventilated and ventilated warm roof insulation solutions with very high thermal performance have been designed to fulfill this need.

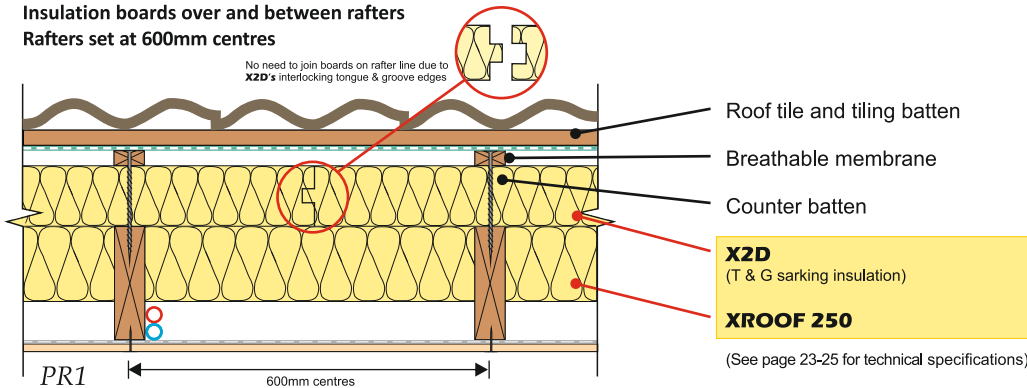
Key Benefits of HEXATHERM Pitch Roof Insulation

- ✓ Excellent life-long thermal performance
- ✓ Very low water absorption
- ✓ User friendly, non irritable
- ✓ Code for Sustainable Homes Pol 1 compliant*
- ✓ Environmentally friendly - 100% recyclable



WARM PITCH ROOF (UN-VENTILATED)

Insulation boards over and between rafters
Rafters set at 600mm centres



Thickness of X2i between rafters (600g)	Thickness of X2D over rafters			
	30 mm	50 mm	60 mm	80 mm
50mm	0.35	0.28	0.25	0.22
60mm	0.32	0.26	0.24	0.20
100mm	0.24	0.20	0.10	0.16
50 + 80mm	0.19	0.17	0.16	0.14
U-value (W/m²K) <small>Calculated in accordance with ISO 6946: 1997</small>				

Pol 1	
X2D/XROOF [®] XPS boards	
GWP value	<5
Code credits	1

Note, Pol1 Code credits have an approximate weighted value of 0,7

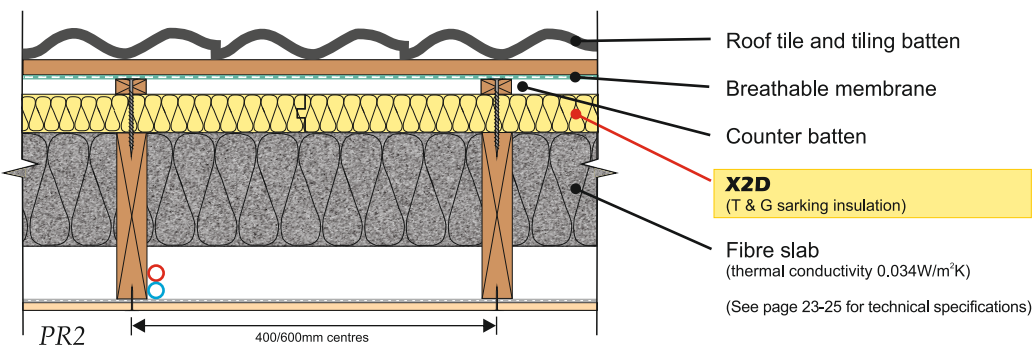
Mat 1	
Element N° 820100034	
Green Guide rating	D
Code credits	0,25

Note, Mat 1 Code credits have an approximate weighted value of 0,3



WARM PITCH ROOF (UN-VENTILATED)

Insulation over and between rafters
Rafters set at 400 or 600mm centres



Thickness of fibre slab between rafters	Thickness of X2D over rafters			
	30 mm	50 mm	60 mm	80 mm
100mm	0.26	0.23	0.21	0.19
150mm	0.20	0.18	0.17	0.15
200mm	0.16	0.15	0.14	0.13
250mm	0.13	0.12	0.12	0.11
U-value (W/m²K) <small>Calculated in accordance with ISO 6946: 1997</small>				

Pol 1	
X2D [®] XPS boards	
GWP value	<5
Code credits	1

Note, Pol1 Code credits have an approximate weighted value of 0,7

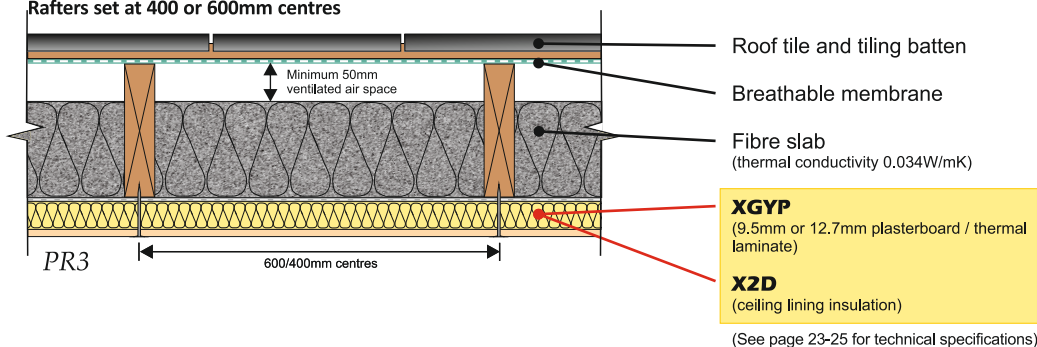
Mat 1	
Element N° 820100056	
Green Guide rating	C
Code credits	0,5

Note, Mat 1 Code credits have an approximate weighted value of 0,3



WARM PITCH ROOF VENTILATED

Insulation between and under rafters
Rafters set at 400 or 600mm centres



Thickness of fibre slab between rafters	Thickness of XGYP below rafters			
	42.5 mm	62.5 mm	72.5 mm	92.5 mm
100mm	0.28	0.24	0.22	0.20
150mm	0.20	0.18	0.17	0.16
200mm	0.17	0.15	0.14	0.13
250mm	0.14	0.13	0.12	0.11
U-value (W/m ² K) Calculated in accordance with ISO 6946: 1997				

Pol 1	
X2D XPS boards	
GWP value	<5
Code credits	1

Note, Pol.1 Code credits have an approximate weighted value of 0.7

Mat 1	
Element N° 820100034	
Green Guide rating	D
Code credits	0.25

Note, Mat. 1 Code credits have an approximate weighted value of 0.3

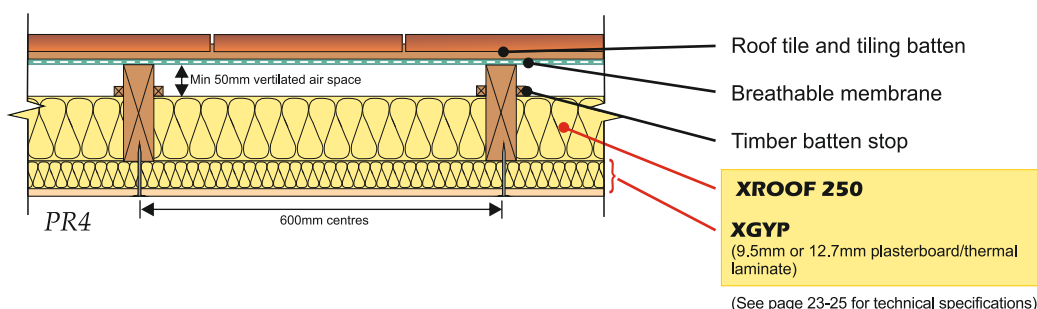
FASTRACKCAD
ARCHITECTURAL CAD DATABASES

FASTRACKBIM
ARCHITECTURAL BIM DATABASES

n55Plus

WARM PITCH ROOF (VENTILATED)

Insulation boards between and under rafters
Rafters set at 600mm centres



Thickness of X2i between rafters (600ø)	Thickness of XGYP below rafters			
	42.5 mm	52.5 mm	72.5 mm	100.5 mm
60mm	0.42	0.32	0.29	0.24
75mm	0.30	0.25	0.23	0.20
80mm	0.24	0.19	0.18	0.16
100mm	0.18	0.16	0.15	0.14
U-value (W/m ² K) Calculated in accordance with ISO 6946: 1997				

Pol 1	
X2i / XGYP	
GWP value	<5
Code credits	1

Note, Pol.1 Code credits have an approximate weighted value of 0.7

Mat 1	
Element N° 812410007	
Green Guide rating	A+
Code credits	3

Note, Mat. 1 Code credits have an approximate weighted value of 0.3

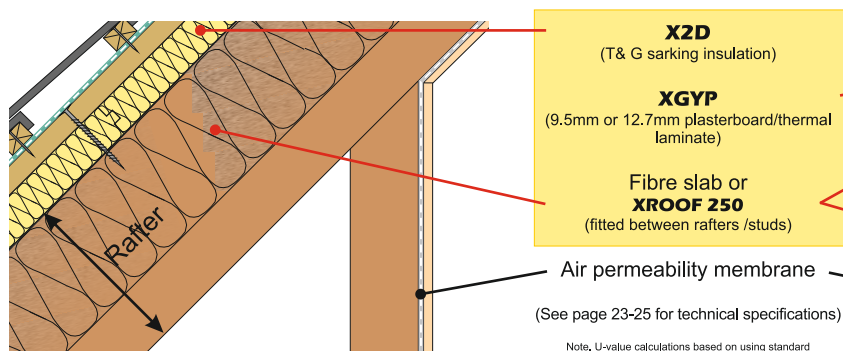
FASTRACKCAD
ARCHITECTURAL CAD DATABASES

FASTRACKBIM
ARCHITECTURAL BIM DATABASES

n55Plus

WARM PITCH ROOF - DORMER DETAIL

Unventilated warm pitch roof



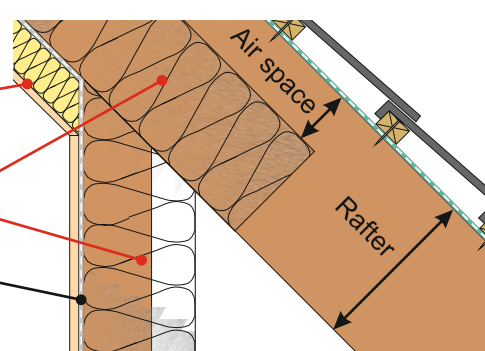
Pol 1	
XROOF X2D	
GWP value	<5
Code credits	1

Note, Pol.1 Code credits have an approximate weighted value of 0.7

Mat 1	
Element N° 812410007	
Green Guide rating	A+
Code credits	3

Note, Mat. 1 Code credits have an approximate weighted value of 0.3

Ventilated warm pitch roof



Vertical timber studs set at 600mm centres				
XROOF	90	110	120	140
Fibre slab (0.034W/mK)	100	120	140	160
	0.35	0.30	0.27	0.24
U-value (W/m ² K) Calculated in accordance with ISO 6946: 1997				